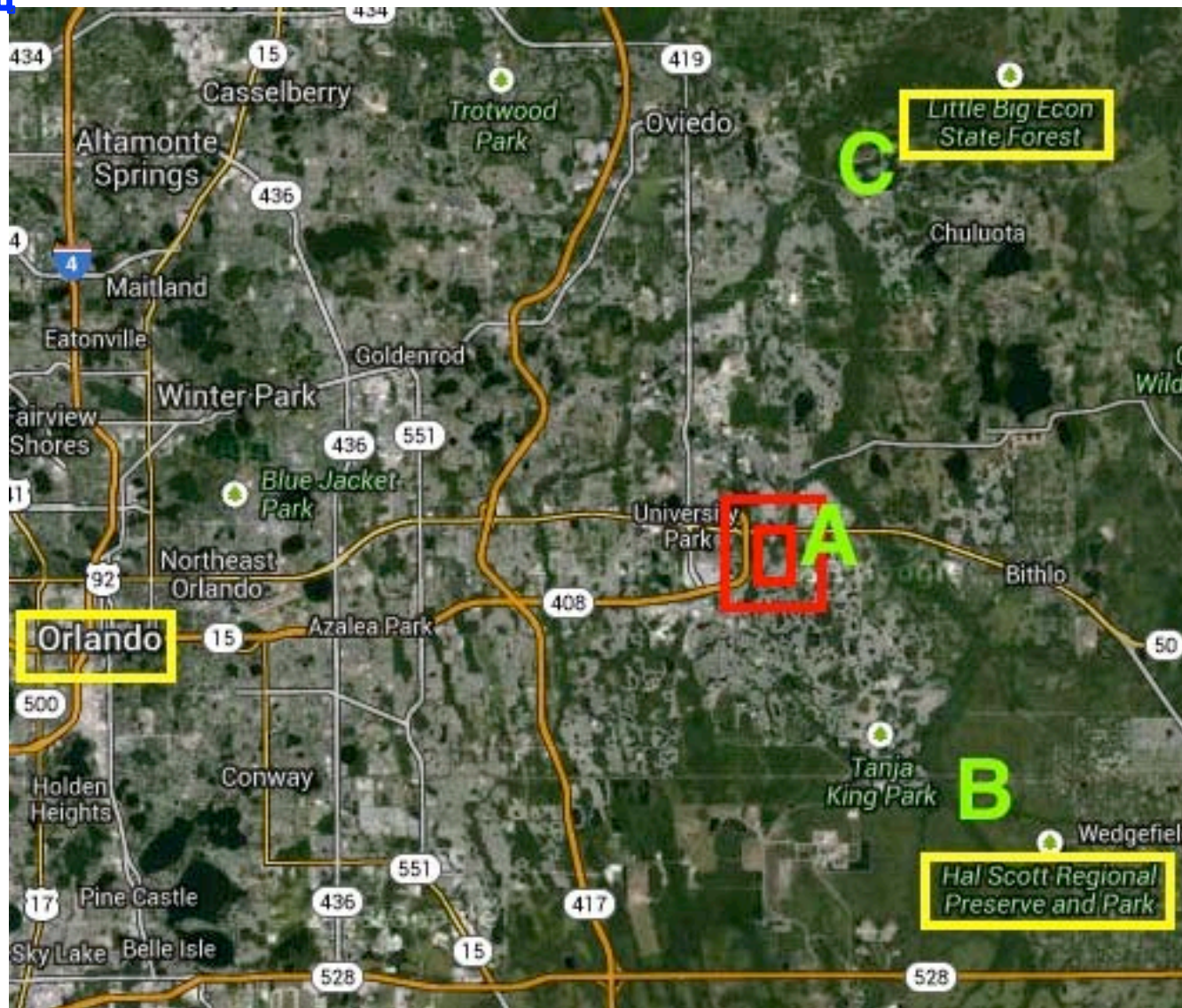
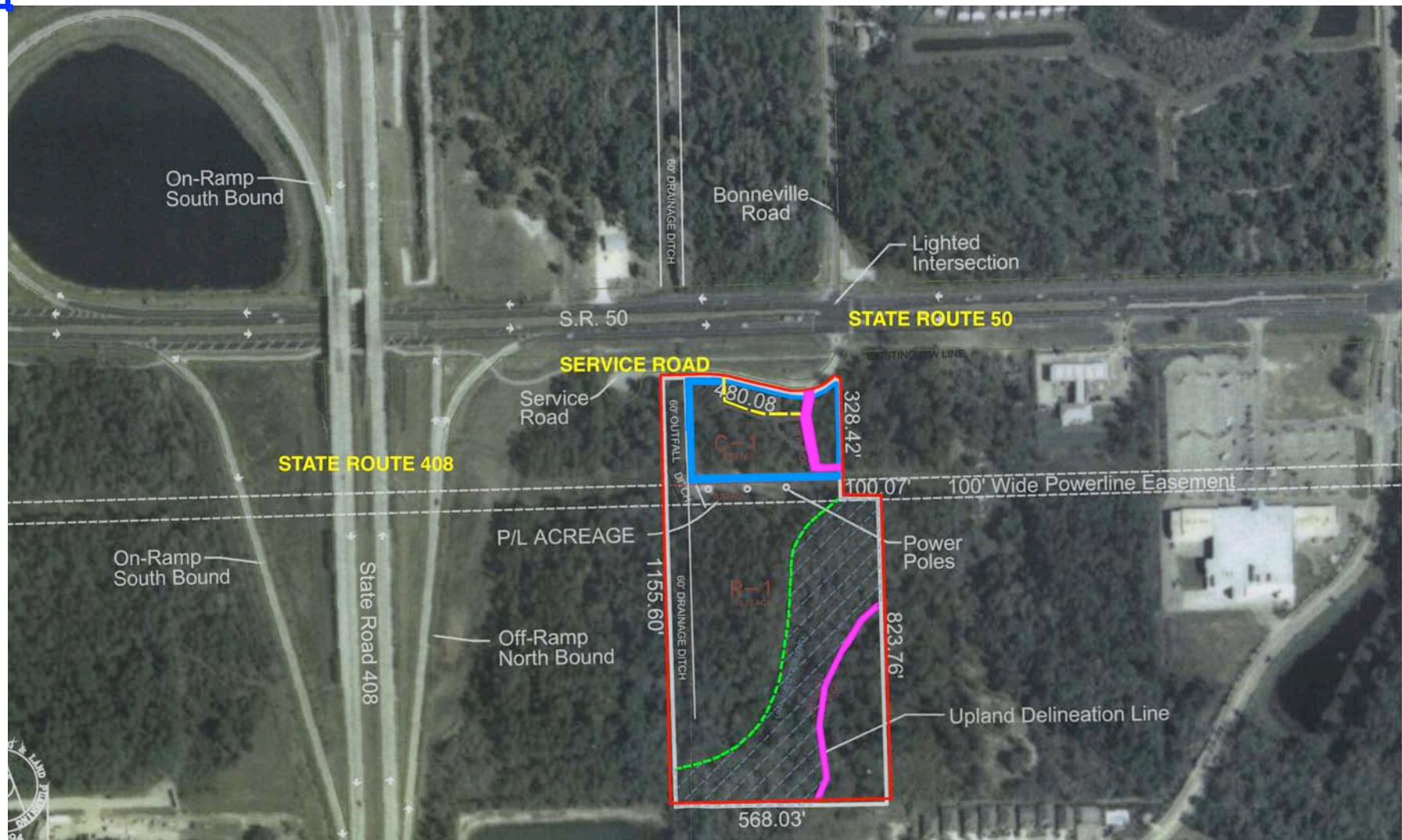


Koontz v. St. Johns River Water Management District
Overview Location



The Koontz property (“A”) is approximately 9 miles East-Northeast of the “Orlando” yellow figure. The Hal Scott Preserve offset mitigation site (near “B”) is approximately 4.5 miles from the Koontz site. The Demetree offset mitigation site (in the Little Big Econ State Forest, “C”) is approximately 6.5 miles from the Koontz site. Note the dark green line of vegetation marking the wetlands flowage of the Econlockhatchee watershed from South to North.

Koontz Site Graphic



The Koontz site: The Red-White lines delineate the full Koontz parcel of 13.7 acres. Everything to the West (left) of the Violet lines is wetlands. The area between the dotted Green line and the lower Violet line is the flowage area of an unnamed tributary of the Econlockhatchee River. The violet lines enclose the two, limited, upland areas of the parcel, at top right and bottom right. (The parallel lines cutting across the parcel are a powerline easement.) Mr. Koontz wanted to fill in the full area north of the powerlines (outlined in Blue), 3.7 acres. The District would only let him develop one acre, unless he provided an offsite offsetting mitigation: The permissible one-acre development was made up of the upper Violet-marked .7-acre parcel, and a .3-acre permitted fill of wetlands to the left of that Violet upland unit (paralleling the service road schematically with Yellow dashes).